



**The
Individual
Standard**

SIBALCO Command - Smartline Command devices in new dimensions - as standard or individual solution

Design and functionality. In Swiss quality.



SIBALCO Command - Smartline

the new benchmark for industrial command devices

The command devices of the **SIBALCO Command - Smartline** series combine high-quality materials and modern design with functionality. The command devices are implemented according to the customer needs and are installed and ready for use in just a few steps. Costs and installation time are reduced and valuable resources can be more efficiently used.

The Command Smartline series is available in two versions

- **Standard - CAS** wide range pre-selected components, fast implementation, best price-performance ratio
- **Individual - CAI** full range of components, solution, individual design and functionality

Our environment is close to our hearts and therefore, we have paid special attention to **sustainability**. The SIBALCO Command - Smartline series is made from **high-quality and recyclable materials**.



Modern design

High quality materials and innovative design. Very flat and slim anodized aluminum housing, beautifully shaped plastic and stainless steel actuators.



Two versions - Standard and Individual

Standard – high flexibility, fast implementation, short delivery times

Individual – maximum flexibility, allows custom specific changes



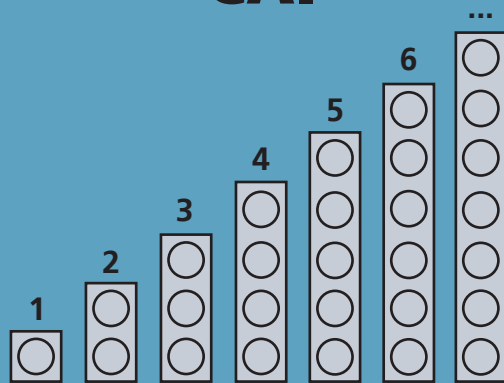
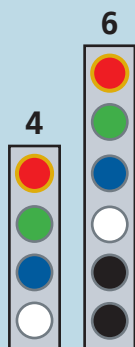
Swiss quality at the best price-performance ratio

High quality and functionality, precision, durability and sustainability. Simplifies procurement, reduces errors and allows you to focus your resources on your core competencies.

Standard CAS

Individual CAI

Number of actuator positions



Housing colour



Connectors

1x M12 - 4-pins
2x M12 - 12-pins

up to 3x M12 - 4, 5, 8, 12, 17-pins

Actuator

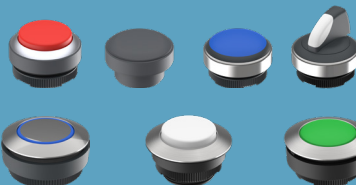
pre-selected components

full range of components

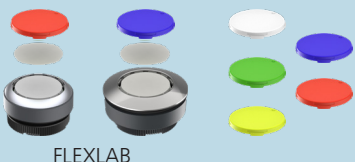
Ø22mm
RAFIX 22 FS+



Ø30mm
RAFIX 30 FS+



Bezel Labelling

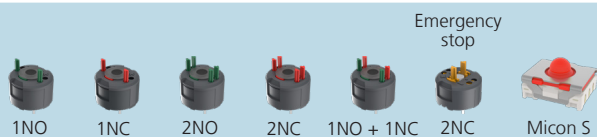


Illumination

yes

yes

Switching and haptic elements



Housing fixing

freely selectable

freely selectable

Protection class

IP54 (components IP65)

up to IP68 (components up to IP69)

Communication

IO-Link*

IO-Link*

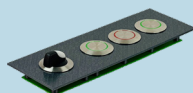
*planned

*planned

Further series

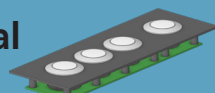
CFS - Frontline Standard

see brochure SIBALCO Command Frontline



CFI - Frontline Individual

see brochure SIBALCO Command Frontline



SLO

Tailor-made solutions in alternative housings



Focusing on what is **important**

The use of the SIBALCO Command - Smartline allows our customers to concentrate on their core competences. A high number of components, which had to be individually managed and assembled, are replaced by a ready-to-use and tested product. This minimises the logistical and operational efforts, valuable resources can be saved for other tasks. Costs are reduced and productivity increased.

- **Reducing costs and complexity**



- **Gain resources**



- **Focus on core competencies**



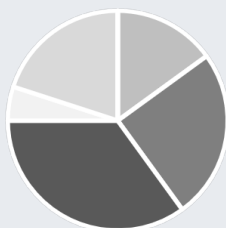
Full cost comparison

Scope

Components, enclosures, procurement & storage, assembly, cabling, testing, troubleshooting and error correction

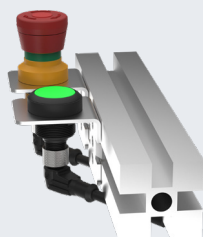
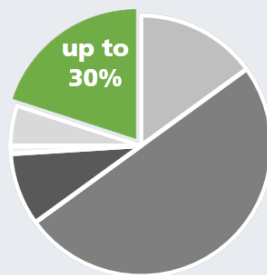
Conventional

Procurement and storage of individual components; wiring, assembly and testing by the customer



RAFI RAMO

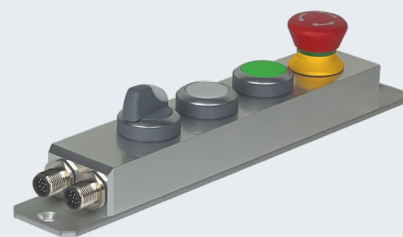
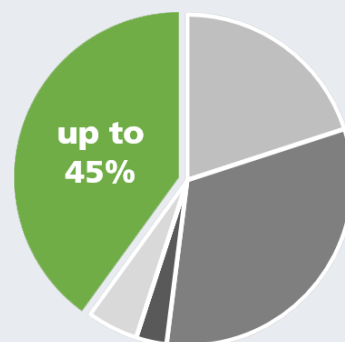
Procurement of the actuators with industry standard M12 connection, mounting plates and M12 cable



SIBALCO Command

Procurement of 1 item, preassembled and tested

Potential savings



Good reasons why **developers** choose **SIBALCO Command - Smartline**



Design, innovation, differentiation

The individual design and possibilities of product customisation, allows the implementation of new innovative solutions. The customer benefits from a command unit tailored to his needs - visually and functionally.



High product quality

The high quality and reliability of SIBALCO Command products, ensure smooth operation in a wide range of applications. Actuators, switching elements and protection class can be selected according to the respective requirements.



Simplified integration into existing systems

The slim design reduces space requirements. Thanks to the industrial standard M12 connection, SIBALCO Command products can be easily integrated into existing systems. The wiring and pin allocation are adapted to customer requirements.



Reduction of development time and effort

Due to the high modularity of SIBALCO Command Smartline, a wide variety of ideas and requirements can be implemented quickly and easily. We also supply the required 3D-data, which can be integrated directly into project documentation.



Fast implementation

Samples, prototypes and series can be delivered quickly.

Why **procurement** is switching to SIBALCO Command - Smartline



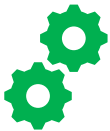
Cost efficiency

SIBALCO Command products use existing standard components. Therefore, that even customised solutions can be implemented cost-effectively.



Reliability of delivery

All components are available on stock. The final products are assembled and tested in our production. This enables us to guarantee short lead times and deliveries on time.



Reduced complexity in procurement

Instead of many individual components, only one product needs to be managed. Procurement and warehousing is optimized.



High product quality

The high quality and reliability of SIBALCO Command products ensure long-lasting and troublefree operation.



Effective communication & expertise

SIBALCO relies on motivated and competent customer service experts. We are happy to help and will take care of your needs.

The SIBALCO Command - Smartline also inspires **Product Management, Marketing & Sales**



Differentiation through design and functionality

The modern design and high-quality materials of SIBALCO Command products enable visual and functional differentiation of machines and systems. End users benefit from a customised actuator layout and haptic experience.



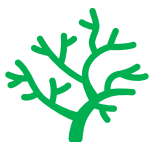
Sustainability

We use environmentally friendly materials and ensure that the selected components are highly durable. The products are produced locally and can be repaired and recycled if necessary.



High quality and customer satisfaction

SIBALCO Command products stand for high reliability and quality. This leads to high customer satisfaction and strengthens trust in the brand and products.



Flexibility

We enable the integration of new functions. Customer requirements can be implemented quickly and easily.

Smartline **Standard - CAS**

Components Selection

The RAFIX series are extremely flexible due to their modular design of actuating and switching elements and can be combined as required. Quick and easy implementation is ensured by a reduced selection of components and arrangements.

RAFIX 22 FS+ IP65 Emergency stop position 1 (fix) Collar round Bezel flat Front ring silver metallic						
	Emergency stop RAFIX 22 FS+	Signal indicator FLEXLAB	Illuminated push-button FLEXLAB	Illuminated selector switch	Key lock switch	Blanking caps
	1.30.273.301/2200	1.74.508.921/2200	1.30.270.921/2200	1.30.272.202/2200	1.30.275.302/0000	5.05.800.067/0000
	Mushroom head red with white arrows reset by rotating		momentary	1x90°, shape V latching	1x90°, shape V latching key removal 0	
RAFIX 30 FS+ IP65 Emergency stop position 1 (fix) RAFIX 22 FS+ Collar round Bezel flat Front ring precious metal						
	Emergency stop RAFIX 30 FS+	Signal indicator FLEXLAB	Illuminated push-button FLEXLAB	Illuminated selector switch	Key lock switch	Blanking caps
	1.30.273.301/2200	1.74.510.011/2X00	1.30.290.921/0000	1.30.292.202/2200	1.30.295.302/0000	5.05.200.028/0000
	Mushroom head red with white arrows reset by rotating		momentary	1x90°, shape V latching	1x90°, shape V latching key removal 0	
RAFIX FS Switching element Universal PCB with light guide silver						
	1NC	1NO	1NO + 1NC	2NC	2NO	2NC Emergency stop
	1.20.126.201/9000	1.20.126.202/9000	1.20.126.203/9000	1.20.126.204/9000	1.20.126.205/9000	1.20.126.604/9000
MICON 5 Haptic element SMT Standard						
	momentary / tactile 1 S ; 5,5N 1.14.002.111/0000					
Bezel colour FLEXLAB transparent latch						
	5.49.263.062/1000	5.49.263.062/1300	5.49.263.062/1400	5.49.263.062/1500	5.49.263.062/1600	

We offer additional actuators in the customer-specific CAI (Command Aluminum Individual) series: [RAFIX 22 FS+](#), [RAFIX 22 FSR](#), [RAFIX 30 FS+](#), as well as other series

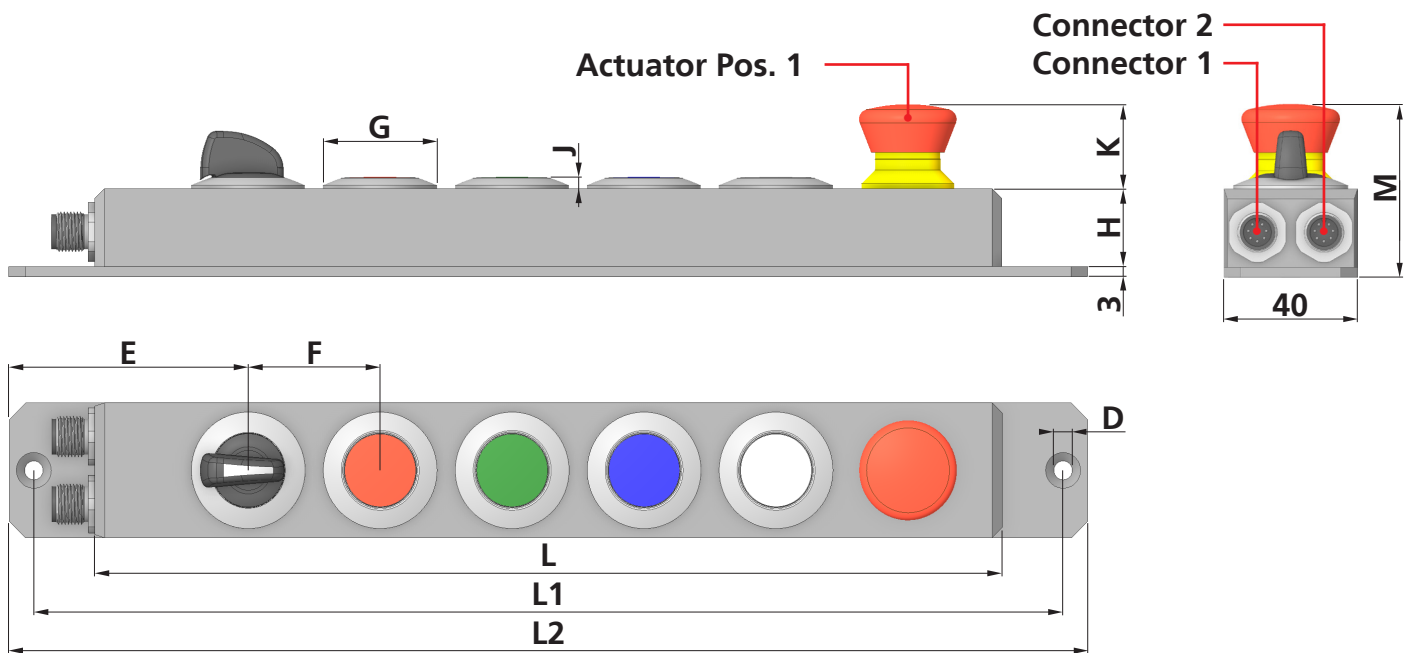
Smartline Individual - CAI Components Selection

Housing	Housing colour																
	Number of connections	Conn. 1 standard (E-stop)	Conn. 2 standard	Conn. 3 (optional)		M12 (standard)							more				
	Connector types																
Number of pins																	
Fixation			more														
Actuators, switching elements and accessories	Series see also Sibalco Webshop	Emergency stop		Signal indicator FLEXLAB	Illuminated pushbutton FLEXLAB	Illuminated pushbutton			Illuminated selector switch	Key lock switch	Blanking caps	Potentiometer	USB				
	RAFIX 22 FS+ IP65																
	RAFIX 22 FSR IP69				none		none					none	none				
	RAFIX 30 FS+ IP65	none	none									none					
	RAFIX FS with light guide Universal, silver								Micon 5 Haptic-element								
		1NC	1NO	1NC + 1NO	2NC	2NO	E-stop 2NC										
	Series	RAFIX 22 FS+			RAFIX 22 FSR			RAFIX 30 FS+									
	Collar shape	round			round			round									
	Collar colour	slate grey			metallic			black									
	Bezel colour																
	Frontring colour																
	- metallic	silver metallic			black			stainless steel			none						
Accessories and other services	Label holder	Protective clap	Protective cap	Wiring		Labelling											
				Always in consultation with the customer		Lettering services - for FLEXLAB - Foil printing - Laser marking											

Overview of the various possible combinations of housings, RAFIX actuators and accessories from the RAFIX 22 FS+, RAFIX 22 FSR and RAFIX 30 FS+ product lines. Take advantage of our wide range of components to find the right solution for your projects. Visit our [Sibalco Webshop with your personal contact person](#), or the RAFI [eCatalog website](#) and find your optimal components for your command device using the keyword or article number search (magnifying glass).

Other series on request.

Smartline dimensions



all dimensions in mm								
Actuator Diameter	G	J	H	D	E	F	K	M
Ø22	29.8	9.85	26.5	5.6	72.5	40	25.5	52
Ø30	34.5	3.50						

Smartline Standard - CAS

all dimensions in mm			
Number of actuators	L	L1	L2
4	195	232	247
6	275	312	327

Smartline Individual – CAI

all dimensions in mm			
Number of actuators	L	L1	L2
1	75	112	127
2	115	152	167
3	155	192	207
4	195	232	247
5	235	272	287
6	275	312	327
7	315	352	367
8	355	392	407

Company information

Sibalco Ltd.

Birmannsgasse 8
P.O. Box
CH-4055 Basel
Switzerland

Phone +41 (0)61 264 10 10
E-Mail info@sibalco.ch

Website www.sibalco.ch



sibalco.ch



[Sibalco
Command](#)

Disclaimer

All rights reserved. Images, text, graphics and other works depicted and published in this brochure as well as their arrangement are subject to the copyright of Sibalco AG. The transmission, reproduction, duplication, modification and distribution of the contents of this brochure is prohibited without the express consent of Sibalco AG.